

Royale Chulan

S E R E M B A N

MEMORABLE MEETINGS AND EVENTS



Seremban's premier hotel is perfect for meetings, exhibitions and conferences as well as an ideal destination for family holidays. The 345 room, four-star deluxe hotel overlooks Seremban's city centre with distant views of the forested hills of Negeri Sembilan.

FACILITIES

Accommodation

- 345 rooms over 10 floors
- 258 deluxe rooms
- 60 executive rooms
- 27 suites

Room Features

- Individually-controlled air conditioning
- Premium furnishings
- Safe deposit box
- Mini-bar fridge
- Flatscreen television with international channels
- Executive work desk
- Coffee and tea-making facilities
- Bathroom with tub and shower
- Hair dryer
- Complimentary WiFi
- Executive Lounge for Executive Room guests

Dining

- Asiatique Restaurant and poolside terrace
- Han Pi Yuen Chinese Restaurant
- Anjung Lounge
- Sweet Seremban
- In-room private dining services

Recreation

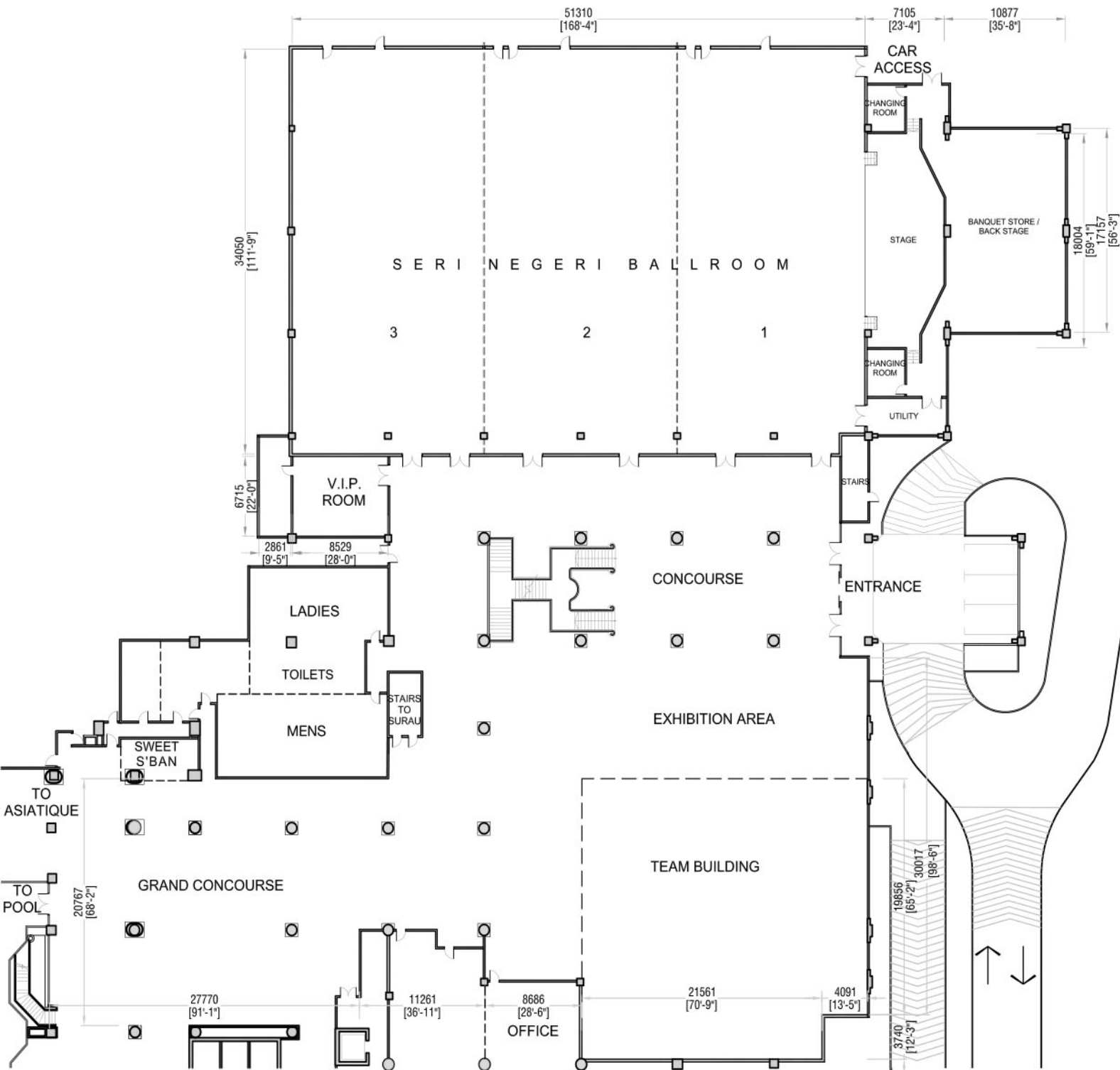
- Pool in landscaped setting
- Jacuzzi, waterfall and slide
- Children's pool and playground
- Fully-equipped gym
- Balinese-inspired Royale Spa
- Tennis court
- Jogging track in Lake Garden

Guest Services

- Hair Saloon
- Handicraft Shop
- Convenience Shop
- Daily laundry services
- Two floors of underground parking
- Currency Exchange
- Limo/Taxi Service
- Local tour and travel agent

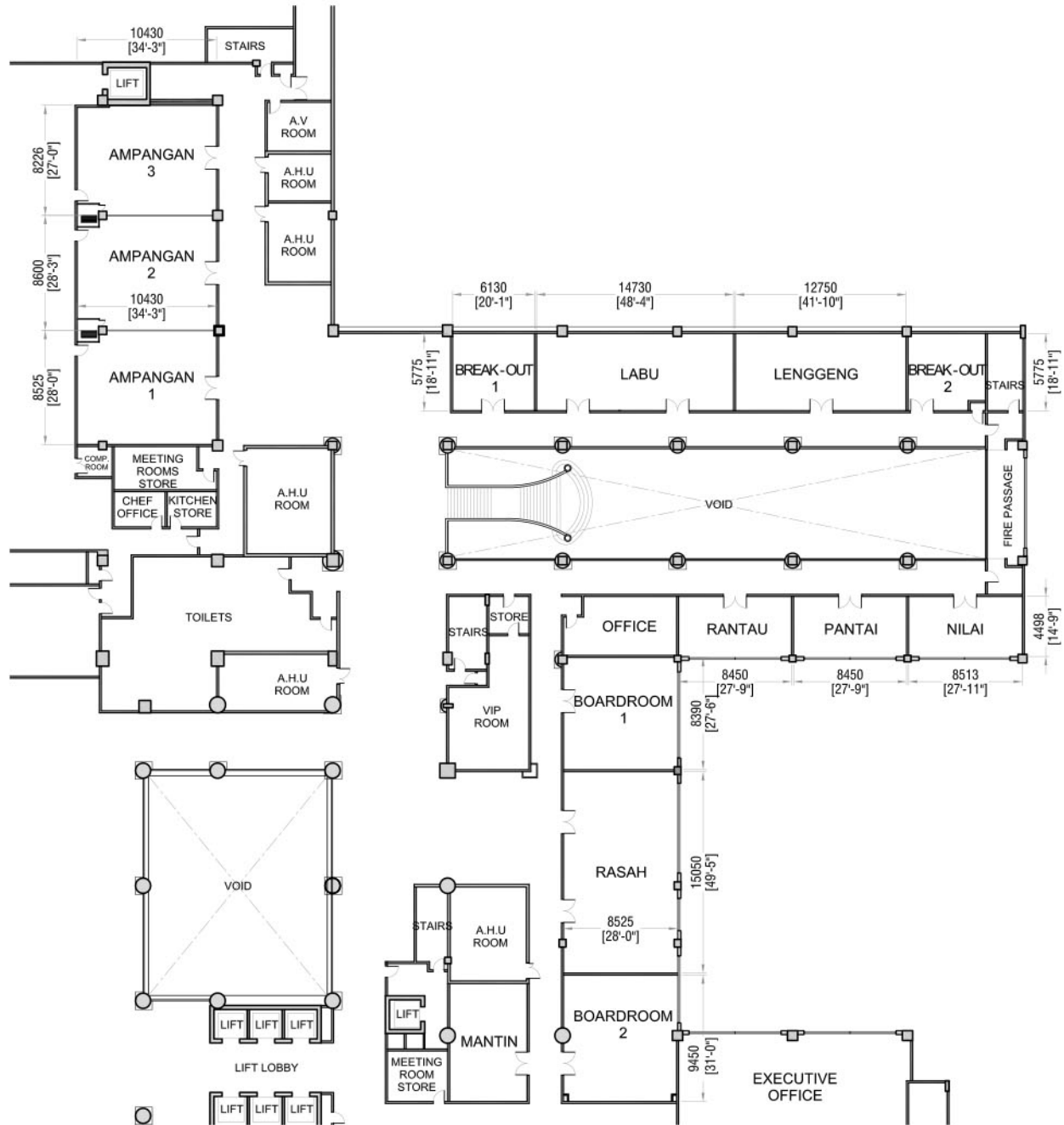


BALLROOM FLOOR PLAN



MEETING FACILITIES		DIMENSIONS			
Room	Metre (L x W x H)	Area (m ²)	Reception	Banquet	Theatre
Seri Negeri Ballroom	51.6 x 32.3 x 10.5	1,666	2,700	1,600	2,700
I	17.2 x 32.3 x 10.5	556	900	500	900
II	17.2 x 32.3 x 10.5	556	900	500	900
III	17.2 x 32.3 x 10.5	556	900	500	900
Taman Tasik (VIP Room)	8.1 x 8.6 x 3.5	70	40	N/A	N/A
Exhibition Hall A	25.8 x 6.4 x 3.8	165	220	N/A	N/A
Exhibition Hall B	14.0 x 17.2 x 7.0	241	250	N/A	N/A
Exhibition Hall C	7.4 x 31.0 x 3.2	229	200	N/A	N/A
Grand Foyer	25.8 x 32.2 x 7.0	831	700	N/A	N/A
Garden Terrace	15.0 x 21.5	323	300	200	N/A

MEETING ROOMS FLOOR PLAN



MEETING FACILITIES		DIMENSIONS			
Room	Metre (L x W x H)	Area (m ²)	Reception	Banquet	Theatre
Boardroom I	8.6 x 8.6 x 3.5	74	N/A	N/A	N/A
Boardroom II	9.7 x 8.6 x 3.5	83	N/A	N/A	N/A
Ampangan Combined	31.5 x 8.6 x 3.5	271	180	150	180
Ampangan I	10.5 x 8.6 x 3.5	90	60	50	60
Ampangan II	10.5 x 8.6 x 3.5	90	60	50	60
Ampangan III	10.5 x 8.6 x 3.5	90	60	50	60
Labu	15.0 x 11.6 x 7.0	87	30	20	30
Linggi	17.1 x 8.2 x 2.3	546	100	80	150
Lenggeng	12.9 x 5.8 x 3.5	75	40	30	40
Mantin	8.9 x 6.0 x 3.5	53	36	20	36
Nilai	8.6 x 4.7 x 3.5	40	25	20	25
Pantai	8.6 x 4.7 x 3.5	40	25	20	25
Rantau	8.6 x 4.7 x 3.5	40	25	20	25
Rasah Combined	15.2 x 8.6 x 3.5	131	80	60	80
Rasah I	7.6 x 8.6 x 3.5	65	40	30	40
Rasah II	7.6 x 8.6 x 3.5	65	40	30	40
Breakout Room I	6.4 x 5.8 x 3.5	37	25	10	25
Breakout Room II	6.4 x 5.8 x 3.5	37	25	10	25

MEMORABLE MEETINGS

The hotel has excellent facilities for meetings, incentives, conferences and exhibitions (MICE) including a dedicated and professional support team. The column-less Seri Negeri is available in various set-ups while the expansive ballroom foyer is ideal for pre-event activities, cocktails and exhibitions.

Ballroom

- Banquet seating for 1,600
- Standing cocktail format for 2,700
- The ballroom can be divided into three separate areas
- Built-in stage
- Separate VIP access and private lounge
- Retractable LED projector

Meeting Rooms

- 17 separate meeting rooms of varying sizes

Foyer

- Spacious two-storey foyer for registration, exhibitions and pre-event cocktails

Support Facilities

- Dedicated professional team
- Complimentary WiFi in all meeting areas
- Fully-equipped kitchen
- Full audio-visual assistance
- Ample undercover parking



LOCATION

Situated in the Lake Gardens district of the Negeri Sembilan state capital of Seremban, the hotel is close enough to Kuala Lumpur and the international airport (KLIA) for short breaks but far enough away from the hustle and bustle of city life to enable guests to be fully revitalised.



Royale Chulan Seremban

Jalan Dato' A. S. Dawood, 70100 Seremban, Negeri Sembilan.

☎ +606 766-6888 ☎ +606 2688-9688 (KL Sales Office) ✉ sales@royalechulan-seremban.com 🌐 www.royalechulan.com

Follow us on 

Royale Chulan
SEREMBAN

CORPORATE TEAM BUILDING PROGRAMME



...Build Success in Serene Seremban

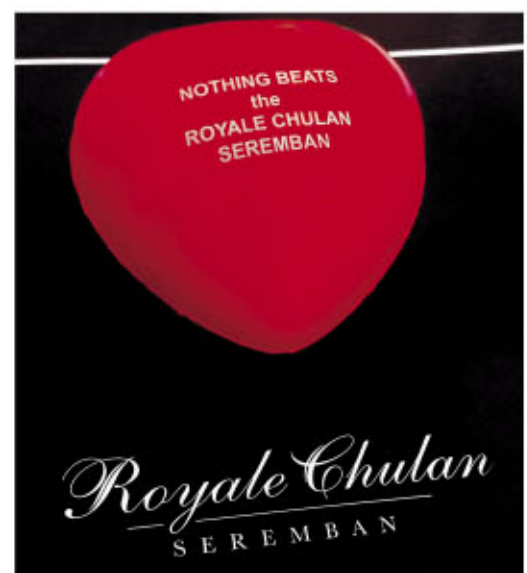
The Programme

The following are some examples of proposed activities that can be conducted. The final list is tailor-made for each group's requirements.

ACTIVITY	DESCRIPTION	OBJECTIVE
Signatures	Participants are given a form with empty rows and asked to do quick interviews of participants especially those they do not know well.	This activity ensures participants to get to know each other better.
Tower	Teams build a tower based on specifications. – the tallest possible, free standing and able to withstand the 'wind-test', using given materials.	This activity will focus on intra-team challenges, building ideas, facing competition and meeting customer expectation.
Human Sculpture	Each team will need to convey a message across to its members without losing its meaning.	This tests each team's ability to communicate effectively.
My Balloon	Participants are given a toothpick and a balloon that they inflate and then protect it at all cost.	Tests participant's interpretation of instructions, probing and skills.
Labels	All participants around the table will be issued a sticker (label) to stick on their forehead, without the owner knowing what is written on this sticker. The team will then engage in a meeting (of a certain project). Members of the team must respect the person's label and conduct the meeting accordingly.	This is an activity to identify different personalities in action and to appreciate how personality types can influence teamwork.
Team Branding	Participants are assigned to teams and will need to establish their identity and branding.	This activity will allow the teams to develop their own identity and demonstrate team camaraderie.
Messenger (word game)	Teams compete to make a list based on specific instructions from the facilitator. Teams are not expected to perform to expectations and will be given another chance to reprieve themselves.	This activity focuses on important qualities in team work : - Taking instructions - Division of roles - Managing deliverables - Self-managing individual/teams

Benefits

- Experiential high-energy fun-filled programme with full participant engagement.
- Innovative and invigorating programmes designed to challenge participants.
- Programme with unique activities.
- Indoor and outdoor programmes so participants can fully experience the setting.
- Participants learn new concepts, skills and gain new knowledge while having fun.
- Three-day/two-night or two-day/one-night programmes include group dynamics, dialogue and discussion.
- BBQ theme night - shared memories, awards and winner podium for dynamic participation.
- Training sessions conclude with feedback, group reflection and shared memories.



Creative and innovative programmes to motivate and re-energise staff

The Venue

Royale Chulan Seremban is an hour's drive from Kuala Lumpur and located in serene gardens beside Seremban Lake Gardens. Deluxe accommodation, inviting restaurants, spa, ballroom plus expansive exhibition lobby, makes the hotel the perfect team-building venue.



The Activities

The hotel is the perfect setting for team building in a secluded location, with professional trainers, ample space for activities and the essential facilities to conduct activities that combine physical and intellectual elements of a successful team-building programme. Training is personalised to the organisation's needs with trainers who take a hands-on approach in outdoor and indoor settings. Packages include trained professionals and materials, and use of the hotel's facilities – restaurants, bar and rooms. Participants are exposed to ideas/concepts that aims to :-

- Inculcate esprit-de-corps in the team regardless of team member differences.
- Work as a team to meet organisational priorities.
- Understand the value of planning and how it affects implementation and organisational performance.
- Improve performance by thinking 'out-of-the-box'.
- Manage resources in order to improve the bottom line.
- Think and act more like a leader.
- Participants will have a memorable experience.

The Format

Introduction

Participants will be introduced to the programme.

Ice-breakers

Ice-breakers are used for participants to get to know each other.

Team Formation and Branding

Teams will be formed and encouraged to take an identity. Teams will work together to test their abilities and to function as a unit. Teams will compete against each other.

Team Competition

The teams will be given an initial 'capital' (pseudo money) which will be theirs throughout the programme.

Teams will be assessed on their performance and will profit or make losses from these activities and a running account will be maintained.

Teams can win or lose money based on positive or negative behaviour – individual or team excellence will be rewarded and negative behaviour will be penalised.

Competition between teams will inject 'positive tension'.

Conclusion

An assessment of the proceedings, feedback and evaluation will be followed by an award ceremony and trainer feedback.

The Trainers

The hotel uses a variety of trainers some of whom have over 30 years' experience in training and corporate life. They are passionate about helping people grow professionally and personally. They bring out the best in people and are able to communicate with participants from all backgrounds, ages and experience. They understand the challenges of senior management and how to gain trust and support staff.

Testimonials

"We have used the Royale Chulan Seremban two years in a row primarily because of their focus and commitment to delivering the high standards we demand from such activities - the hotel was evaluated exceptionally well by my staff."
~ Managing Director, leading Malaysian company.

"The activities were well paced and the facilitators were very engaging. We have become much closer as a team after the programme." ~ Head, Government agency.

"...This team building activity was unique, engaging and fun despite time restrictions." ~ Marketing Executive, leading international company.

"Coming together is a beginning, keeping together is progress, working together is success." ~ Henry Ford



Royale Chulan Seremban

Jalan Dato' A. S. Dawood, 70100 Seremban, Negeri Sembilan.

☎ +606 766-6888 ☎ +606 2688-9688 (KL Sales Office) ✉ sales@royalechulan-seremban.com 🌐 www.royalechulan.com

